



## EXHIBITION IMAGE CAPTIONS

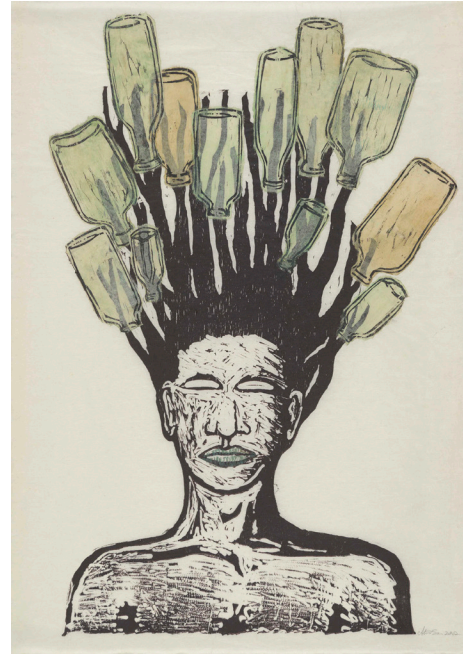
### Contacts:

**Mike Brice**  
Public Relations Specialist  
419-255-8000 x7301  
mbrice@toledomuseum.org

**Stephanie Elton**  
Director of Communications  
419-255-8000 x7428  
selton@toledomuseum.org

### *Mirror, Mirror: The Prints of Alison Saar*

1. Alison Saar (American (b. 1956)) *Delta Doo*, 2002  
monoprint, woodcut and chine collé 33 7/8 x 24 3/8 in.  
Collection of Jordan D. Schnitzer



2. Alison Saar (American (b. 1956)) *High Yella' Blue*, edition 3/21, 2016 intaglio, pochoir on found vintage handkerchief 12 1/4 x 12 1/4 in. Collection of Jordan D. Schnitzer



3. Alison Saar (American (b. 1956)) *Breach*, edition 8/18,  
2017 woodcut on vintage linen seed sack 42 1/2 x 18 3/4 in.  
Collection of Jordan D. Schnitzer

